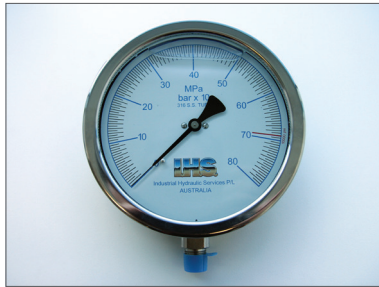




# PRESSURE GAUGES

## 6" Analogue Gauge

- Stainless steel housing
- Glycerine filled
- 0-80 MPa scale
- 3/8"-18 NPT Bottom mount



## 4" Analogue Gauge

- Stainless steel housing
- Glycerine filled
- 0-80 MPa scale
- 3/8"-18 NPT Bottom mount



## 2.5" Analogue Gauge

- Stainless steel housing
- Glycerine filled
- Dual scale 0-1000 bar / 0-15,000 PSI
- 1/4"-19 BSPP Bottom mount



## 4" Digital Gauge

- Stainless steel housing
- Glycerine filled
- MPa scale
- 3/8"-18 NPT Bottom mount



## Calibration

Need your gauge calibrated to a jack? We have a NATA certified calibration laboratory on site. See our IHS Force Calibration Laboratory brochure for more details.



# PRESSURE GAUGES

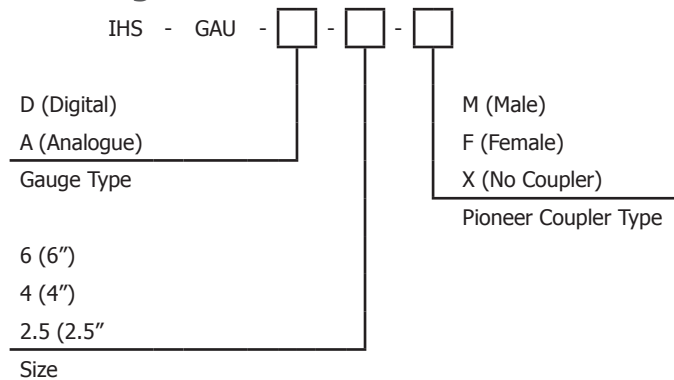
## Carry Case

All of our gauges are supplied with a foamed lined, hard carry case.

- Water tight
- Vibration / shock proof
- Dust proof
- Light weight
- Stackable
- Chemical resistant / corrosion proof
- Super strong latches / lockable
- Marine yellow



## Ordering Information



Note: Digital gauge available in 4" size only.

## Accessories / Spares

Part No.	Description
IHS-GLY	500ml Glycerine bottle
IHS-GAU-CASE	Carry Case
IHS-QA-06M-06M	Quick action coupler - 3/8" Male body / 3/8" NPT Male thread
IHS-QA-06F-06M	Quick action coupler - 3/8" Female body / 3/8" NPT Male thread
IHS-QA-06-CAP	Quick action coupler protection cap - 3/8"
IHS-QA-06-PLUG	Quick action coupler protection plug - 3/8"

IHS HYDRAULIC PRODUCTS & SERVICES

P: +61 3 9645 1522 | E: mail@mcmillaneng.com.au | W: www.mcmillaneng.com.au